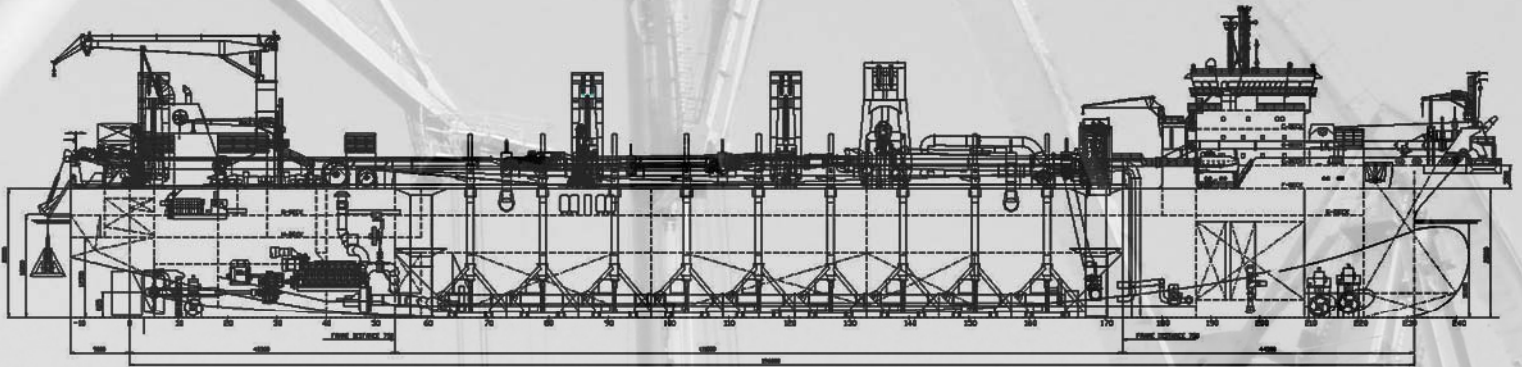


46,000 m³ Trailing Suction Hopper Dredger



Main Particulars

Length overall	213.50 m
Length between perp	196.00 m
Breadth moulded	41.00 m
Depth moulded	20.00 m
Dredging draught mld.	15.15 m
Capacity	46,000 m ³
Dredging depth	up to 142 meters

Main Engines

Two (2) 4 stroke diesel engines 19.200 kW each.

Electric Generators

Two (2) PTO Driven Alternators 18.500 kVA each
 One (1) Aux generator
 One (1) Emergency generator

Arrangement

Two (2) Suction pipes with submerged dredge pumps
 Nine (9) Double bottom doors
 Two (2) Shallow water doors
 Two (2) adjustable overflows
 One (1) Shore discharge installation
 Two (2) Shore discharge dredge pumps

Other systems

One (1) Travelling deckcrane
 Two (2) Bow thrusters
 One (1) Stern thruster

Classification *Bureau Veritas*



Construcciones Navales del Norte

Ribera de la Ría s/n
 48910 Sestao (Vizcaya, SPAIN)

T +34 944 858 600

F +34 944 858 651

E info@lanaval.es

I www.lanaval.es